



WINDESIGN

CLOTHING COLLECTION

CLOTHING | BAGS | ACCESSORIES

Our sailing apparel is crafted from high-performance fabrics, each carefully selected with the sailor in mind. Whether it is superior waterproof protection, flexible and warm neoprene, or lightweight UV-resistant materials, every piece delivers reliable protection, comfort, and freedom of movement in all conditions on the water.

The logos below provide a clear overview of our key materials and their unique characteristics. These icons also appear in our catalogue at our clothing items, making it quick and easy to identify the features you need. Whatever you choose, you can be confident that our products meet the highest standards of quality and reliability.

2 LAYER

2-Layer fabric combines a durable 75D twill polyester pongee outer with a PU-coated inner layer. This smart construction delivers a waterproof rating of 10.000 mm and breathability of 10.000 g/m²/24hr, keeping you dry and comfortable in all conditions.



W-Flex stands for our neoprene flexibility. This material combines high-quality neoprene with specialized manufacturing techniques to achieve superior elasticity and consistent stretch, ensuring unrestricted movement and reliable comfort during active sailing.



AIR MESH fabric wicks away moisture and promotes airflow, keeping you dry, comfortable, and fresh all day on the water.



NEO-SKIN fabric is a 3-layer neoprene fabric consisting of a water-repellent nylon outer, a lightweight stretch mid layer and a soft nylon inner layer.

RIPSTOP

Ripstop fabric features a unique grid of reinforced threads that prevents small tears from spreading, boosting durability and longevity.



Terry fabric is soft, warm, and quick-drying, with a looped construction that absorbs moisture while keeping you comfortable against the skin.

3 LAYER

3-Layer construction features a 75D twill polyester pongee outer, a PTFE membrane, and a bonded 30D tricot inner layer. Engineered for demanding conditions, it provides a waterproof rating of 20.000 mm and a breathability rating of 15.000 g/m²/24hr for reliable all-weather performance.



W/P - MVP indicates a fabric's waterproof rating (W/P) and moisture vapor permeability (MVP), providing clear information on water resistance and breathability.

MESH##LINING

Mesh Lining provides a comfortable, breathable layer that reduces stickiness and makes changing clothes easier, keeping you dry and ready to perform.

UV50+ SKIN

UV50+ SKIN is a high-performance fabric offering UPF 50+ protection, effectively shielding the skin from harmful UVA and UVB rays during long hours on the water.

STRETCH-SKIN

STRETCH-SKIN is a high-stretch fabric designed to enhance mobility, comfort, and functional fit, providing reliable performance during active sailing.



POLAR is a soft fleece fabric offering superior insulation, moisture-wicking capabilities, and good breathability, ensuring warmth and comfort for all-day performance.



NEOPRENE BOTTOMS / LONG JOHN

W-FLEX NEOPRENE PANTS

UNISEX

EX2523J...	W-Flex neoprene pants; Junior	(JS, JM, JL, JXL)
EX2523...	W-Flex neoprene pants; Adult	(S, M, L, XL)

FEATURES

- 3 mm Neo-Skin fabric
- W-Flex technology
- Flatlock stitching
- Reinforced in knees and seat
- Adjustable Velcro high waistband



NEW



W-FLEX
NEO-SKIN

SIZE	JS	JM	JL	JXL	S	M	L	XL
Height [cm]	128 - 136	137 - 145	146 - 154	155 - 162	163 - 170	171 - 178	179 - 186	187 - 190
Waist [cm]	57 - 60	61 - 64	65 - 68	69 - 73	74 - 79	80 - 86	87 - 94	95 - 102
Chest [cm]	64 - 69	70 - 75	76 - 82	83 - 89	90 - 96	97 - 103	104 - 111	112 - 119

3MM NEO-SKIN LONG JOHN / LONG JANE

UNISEX

EX2524J...	Neo-Skin Long Jane; Junior	(JS, JM, JL, JXL)
EX2525J...	Neo-Skin Long John; Junior	(JS, JM, JL, JXL)
EX2525...	Neo-Skin Long John; Adult	(S, M, L, XL)

FEATURES

- 3 mm Neo-Skin fabric
- Velcro shoulder strap
- Horizontal pee zipper; (Long John)
- W-Flex technology
- Flatlock stitching
- Reinforced in knees and seat
- High quality stitched leg seals



W-FLEX
NEO-SKIN

SIZE	JS	JM	JL	JXL	S	M	L	XL
Height [cm]	128 - 136	137 - 145	146 - 154	155 - 162	163 - 170	171 - 178	179 - 186	187 - 190
Waist [cm]	57 - 60	61 - 64	65 - 68	69 - 73	74 - 79	80 - 86	87 - 94	95 - 102
Chest [cm]	64 - 69	70 - 75	76 - 82	83 - 89	90 - 96	97 - 103	104 - 111	112 - 119

NEOPRENE TOPS / LYCRA BOTTOMS

2.5MM NEO-SKIN TOP

UNISEX

EX2526J...	Neo-skin top; Junior	(JS, JM, JL, JXL)
EX2526...	Neo-skin top; Adult	(S, M, L, XL)

FEATURES

- 2.5 mm Neo-skin fabric
- Polar inner lining
- W-Flex technology
- Flatlock stitching
- Soft smooth neoprene waist
- Soft touch glideskin neck
- High quality stitched wrist seals

NEO-SKIN
WFLEX
POLAR



SIZE	JS	JM	JL	JXL	S	M	L	XL
Height [cm]	128 - 136	137 - 145	146 - 154	155 - 162	163 - 170	171 - 178	179 - 186	187 - 190
Waist [cm]	57 - 60	61 - 64	65 - 68	69 - 73	74 - 79	80 - 86	87 - 94	95 - 102
Chest [cm]	64 - 69	70 - 75	76 - 82	83 - 89	90 - 96	97 - 103	104 - 111	112 - 119

NEO-RASH SHORTS

UNISEX

EX2565J...	Neo-rash shorts; Junior	(JS / JM, JL / JXL)
EX2565...	Neo-rash shorts; Adult	(S, M, L, XL)

FEATURES

- Back panel; 1.5 mm Neo-skin fabric
- Front panel; Flexible lycra
- Reinforced in seat
- W-Flex technology
- Flatlock stitching
- Waistband with Japanese Velcro
- UV50+ protection

NEO-SKIN
WFLEX
UV50+ SKIN



SIZE	JS / JM	JL / JXL	S	M	L	XL
Height [cm]	128 - 145	146 - 162	163 - 170	171 - 178	179 - 186	187 - 190
Waist [cm]	57 - 64	65 - 73	74 - 79	80 - 86	87 - 94	95 - 102

NEO-RASH PANTS

UNISEX

EX2567J...	Neo-rash pants; Junior	(JS / JM, JL / JXL)
EX2567...	Neo-rash pants; Adult	(S, M, L, XL)

FEATURES

- Reinforced in knees and seat
- Adjustable waist cord
- W-Flex technology
- Flatlock stitching
- UV50+ protection

NEO-SKIN
WFLEX
UV50+ SKIN



SIZE	JS / JM	JL / JXL	S	M	L	XL
Height [cm]	128 - 145	146 - 162	163 - 170	171 - 178	179 - 186	187 - 190
Waist [cm]	57 - 64	65 - 73	74 - 79	80 - 86	87 - 94	95 - 102



AIR MESH
UV 50+ SKIN

AIRMESH LONG SLEEVE RASH TOP UNISEX

EX2542J...	Airmesh long sleeve rash top; Junior	(JS, JM, JL, JXL)
EX2542...	Airmesh long sleeve rash top; Adult	(S, M, L, XL)

FEATURES

- UV50+ protection
- Airmesh moisture-wicking armpit panel
- Reduces sweating
- Snug fit with flatlock stitching

SIZE	JS	JM	JL	JXL	S	M	L	XL
Height [cm]	128 - 136	137 - 145	146 - 154	155 - 162	163 - 170	171 - 178	179 - 186	187 - 190
Waist [cm]	57 - 60	61 - 64	65 - 68	69 - 73	74 - 79	80 - 86	87 - 94	95 - 102
Chest [cm]	64 - 69	70 - 75	76 - 82	83 - 89	90 - 96	97 - 103	104 - 111	112 - 119



UV 50+ SKIN

SHORT SLEEVE RASH TOP UNISEX

EX2535J...	Short sleeve rash top; Junior	(JS, JL)
EX2535...	Short sleeve rash top; Adult	(S, M, L)

FEATURES

- UV50+ protection
- Flatlock stitching
- Snug fit

SIZE	JS	JL	S	M	L
Height [cm]	128 - 145	146 - 162	163 - 171	172 - 180	181 - 190
Waist [cm]	57 - 64	65 - 73	74 - 82	83 - 91	92 - 102
Chest [cm]	64 - 75	76 - 89	90 - 98	99 - 107	108 - 119



RASH TANKTOP UNISEX

EX2532JB	Rash tanktop; Junior	Blue
EX2532JG	Rash tanktop; Junior	Grey
EX2532JO	Rash tanktop; Junior	Orange
EX2532JR	Rash tanktop; Junior	Red
EX2532B	Rash tanktop; Adult	Blue
EX2532G	Rash tanktop; Adult	Grey
EX2532O	Rash tanktop; Adult	Orange
EX2532R	Rash tanktop; Adult	Red

FEATURES

- 4 colors
- UV50+ protection
- Non-slip grip on the inside

SUITABLE FOR LOGO PRINTING
ON FRONT AND BACK



UV 50+ SKIN

WATERPROOF CLOTHING

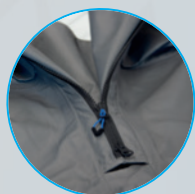
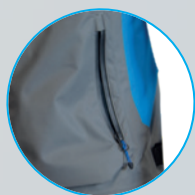
3 LAYER PERFORMANCE TROUSERS

UNISEX

EX2442... 3 Layer Performance Trousers (XS, S, M, L, XL)

FEATURES

- Extremely waterproof; W/P 20.000 mm
- Extremely breathable; 15.000 g/m2/24hr
- Polar fleece pockets with YKK water repellent zipper
- YKK two-way front zipper
- Adjustable waist band
- Guard with drainage for added water protection
- 1000D Cordura reinforced knees and seat
- Large Velcro closable front leg pocket



POLAR

W/P
MVP
3 LAYER

SIZE	XS	S	M	L	XL
Height [cm]	158 - 165	166 - 173	174 - 181	182 - 185	186 - 190
Waist [cm]	70 - 74	75 - 80	81 - 87	88 - 94	95 - 102
Chest [cm]	85 - 89	90 - 94	95 - 102	103 - 110	111 - 119

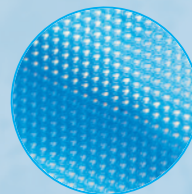
10K COMFORT SPRAYTOP

UNISEX

EX2445J...	10K Comfort Spraytop; Junior	(JS, JM, JL, JXL)
EX2445...	10K Comfort Spraytop; Adult	(S, M, L, XL)

FEATURES

- Extremely waterproof; W/P 10.000 mm
- Extremely breathable; 10.000 g/m²/24hr
- Thin and lightweight fabric
- Mesh inner lining
- Adjustable neck fastening
- Stretch PU seal & adjustable cuffs
- Chest pocket
- Neoprene waistband with Velcro fastening



SIZE	JS	JM	JL	JXL	S	M	L	XL
Height [cm]	128 - 136	137 - 145	146 - 154	155 - 162	163 - 170	171 - 178	179 - 186	187 - 190
Waist [cm]	57 - 60	61 - 64	65 - 68	69 - 73	74 - 79	80 - 86	87 - 94	95 - 102
Chest [cm]	64 - 69	70 - 75	76 - 82	83 - 89	90 - 96	97 - 103	104 - 111	112 - 119

10K HOODED JACKET

UNISEX

EX2447J...	10K Hooded Jacket; Junior	(JS, JM, JL, JXL)
EX2447...	10K Hooded Jacket; Adult	(S, M, L, XL)

FEATURES

- Extremely waterproof; W/P 10.000 mm
- Extremely breathable; 10.000 g/m²/24hr
- Thin and lightweight fabric
- Mesh inner lining
- Adjustable neck fastening
- Stretch PU seal & adjustable cuffs
- Chest pocket
- Neoprene waistband with Velcro fastening



SIZE	JS	JM	JL	JXL	S	M	L	XL
Height [cm]	128 - 136	137 - 145	146 - 154	155 - 162	163 - 170	171 - 178	179 - 186	187 - 190
Waist [cm]	57 - 60	61 - 64	65 - 68	69 - 73	74 - 79	80 - 86	87 - 94	95 - 102
Chest [cm]	64 - 69	70 - 75	76 - 82	83 - 89	90 - 96	97 - 103	104 - 111	112 - 119

PROTECTIVE WEAR

RIPSTOP SIDE ZIP BUOYANCY AID UNISEX

EX2521J...	Ripstop side zip buoyancy aid; Junior	(JS, JM, JL)
EX2521...	Ripstop side zip buoyancy aid; Adult	(S, M, L, XL)

FEATURES

- Ripstop outer fabric
- Side zip entry; (YKK)
- Double sided Velcro waist closure
- Padded shoulders with reflection
- Self-draining front pocket
- Non-slip grip on the inside
- Junior sizes includes crotch strap
- EN ISO 12402-5 50N approved

*Not USCG approved

RIPSTOP



SIZE	JS	JM	JL	S	M	L	XL
Chest [cm]	75 - 80	80 - 85	85 - 90	90 - 95	95 - 105	105 - 115	115 - 125
Weight [kg]	30 - 40	30 - 40	35 - 45	40 - 60	60 - 70	70+	70+
Buoyancy rating [N]	35	35	35	40	45	50	50

JUNIOR HIKING PANTS UNISEX

EX2500...	Junior hiking pants	(JS, JM, JL)
-----------	---------------------	--------------

FEATURES

- Durable 1680D polyester
- Stiff polyester battens
- Velcro closures on legs and waist
- Elastic sections to increase comfort



SIZE	JS	JM	JL
Waist [cm]	53 - 59	60 - 67	69 - 86
Waist [inch]	20 - 23	24 - 26	27 - 34
Age [years]	9 - 11	11 - 13	13 - 15

KEVLAR KNEEPADS

UNISEX

EX2545J	Kevlar kneepads	(JUNIOR)
EX2545SM	Kevlar kneepads	(S / M)
EX2545LXL	Kevlar kneepads	(L / XL)

FEATURES

- Kevlar protection
- Elastic adjustable straps
- Double secured Velcro fastening
- W-Flex technology
- Ergonomical designed
- Flatlock stitching



NEO-SKIN
WFLEX

SIZE	JUNIOR	S / M	L / XL
Circumference above knee [cm]	29 - 33	34 - 39	40 - 48
Circumference below knee [cm]	25 - 29	30 - 35	36 - 44

SHORT FINGER GLOVES

UNISEX

EX2550J...	Short finger gloves; Junior	(JS, JM, JL)
EX2550...	Short finger gloves; Adult	(S, M, L, XL)

FEATURES

- Amara grip panel
- UV50+ protection
- Comfortable knuckle panel
- Velcro secured wrist
- Comfortable stretch fabric
- Quick dry fabric



STRETCH-SKIN
UV50+ SKIN

SIZE	JS	JM	JL	S	M	L	XL
Circumference hand [cm]	14.5 - 15.5	15.5 - 16.5	16.5 - 17.5	17.5 - 19	19 - 21.5	21.5 - 23	23 - 24.5

QUICK DRY GEAR

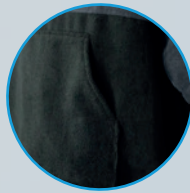
QUICK DRY TERRY PONCHO UNISEX

EX2480J...	Quick dry Terry poncho	(JUNIOR)
EX2480...	Quick dry Terry poncho	(ADULT)

FEATURES

- Side openings to get dressed easily
- Comfortable and warm Terry skin
- Kangaroo pocket
- Easily absorbs water
- Double layered hood
- Double layered arm openings
- Longer and double layered back edge
- 300 gsm quick dry Terry microfiber

TERRY



SIZE	JUNIOR	ADULT
Height [cm]	128 - 162	163 - 190
Waist [cm]	57 - 73	74 - 102

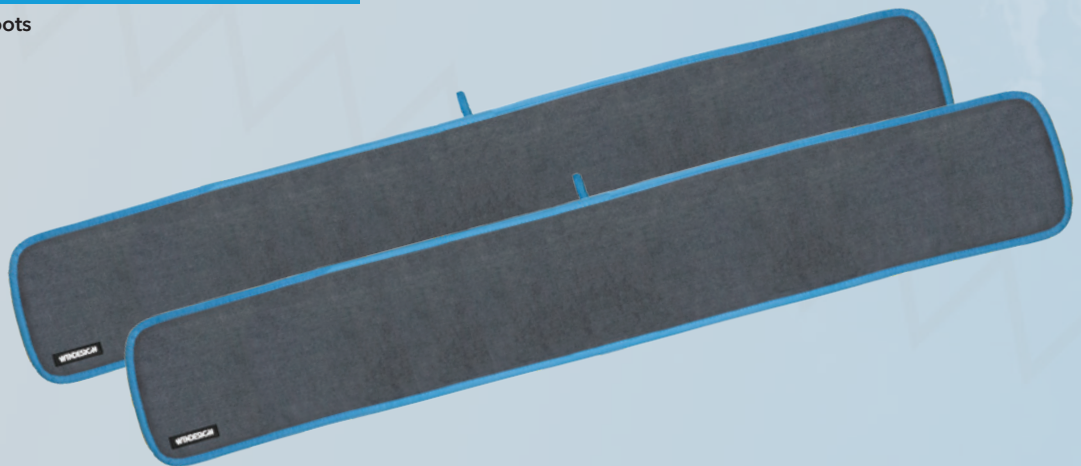
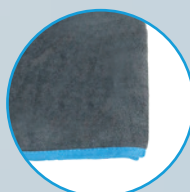
QUICK DRY TERRY BOOT TOWEL 120x20 CM

EX2490	Quick dry Terry boot towel	Set of 2
--------	----------------------------	----------

FEATURES

- Quickly absorbs water out of your boots
- Soft Terry skin
- Hang loop
- 300 gsm quick dry Terry microfiber

TERRY



W-FLEX NEOPRENE SOCKS

UNISEX



EX2475...

W-Flex neoprene socks

(S, M, L, XL)

FEATURES

- 2 mm neoprene fabric
- W-Flex technology
- Pull strap
- Flatlock stitching


WFLEX
NEO-SKIN

SIZE	S	M	L	XL
Europe	32 - 35	36 - 39	40 - 44	45 - 48
UK	1 - 3	4 - 6	7 - 9	10 - 12
USA Mens	1.5 - 3.5	4.5 - 6.5	7.5 - 9.5	10.5 - 12.5

5MM NEOPRENE BOOTS

UNISEX



EX2450...

Neoprene sailing boots

FEATURES

- 5 mm neoprene
- Durable non-slip sole
- High quality YKK zipper
- Zip protection flap
- Lightweight


NEO-SKIN

SIZE	J1	J2	J3	J4	J5	XS	S	M	L	XL	2XL	3XL
Europe	32 - 33	34	35	36	37 - 38	39	40 - 41	42	43 - 44	45	46	47 - 48
UK	1	2	3	4	5	6	7	8	9	10	11	12
USA Mens	1.5	2.5	3.5	4.5	5.5	6.5	7.5	8.5	9.5	10.5	11.5	12.5

3MM NEOPRENE SHOES

UNISEX



EX2460...

Neoprene dinghy shoes

FEATURES

- 3 mm neoprene
- Flatlock stitching
- Double stabilized sole
- Adjustable pull string for snug fit


NEO-SKIN

SIZE	J1	J2	J3	J4	J5	XS	S	M	L	XL	2XL	3XL
Europe	32 - 33	34	35	36	37 - 38	39	40 - 41	42	43 - 44	45	46	47 - 48
UK	1	2	3	4	5	6	7	8	9	10	11	12
USA Mens	1.5	2.5	3.5	4.5	5.5	6.5	7.5	8.5	9.5	10.5	11.5	12.5

HEADWEAR

SUN PROTECTION CAP UNISEX

EX2580	Sun protection cap	Melange Grey
--------	--------------------	--------------



FEATURES

- Plastic reinforced pre-curved peak
- Melange fabric
- Breathable mesh back panel
- Adjustable hook / loop closure

FLOATING KNITTED BEANIE UNISEX

EX2582J	Floating knitted beanie	Junior
EX2582	Floating knitted beanie	Adult



JUNIOR

ADULT

FEATURES

- Floats in water
- Comfortable and warm
- Adult size with roll-over

WEBBING CAPLEASH UNISEX

EX2596	Webbing capleash	Length; 30 cm
--------	------------------	---------------



FEATURES

- Durable webbing
- Easy to use crocodile clips

SUN PROTECTION VISOR UNISEX

EX2581B	Sun protection visor	Black
EX2581C	Sun protection visor	Cyan



FEATURES

- Comfortable 3-layer cotton sweatband
- Plastic reinforced pre-curved peak
- Mesh fabric with tricot backing
- Minimal water absorption
- Adjustable hook / loop closure

2 MM NEOPRENE BEANIE UNISEX

EX2584	Neoprene beanie
--------	-----------------



FEATURES

- 2 mm Neo-Skin fabric
- Comfortable and warm
- Capleash attachment strap

FLOATING SUNGLASSES STRAP UNISEX

EX2597	Floating sunglasses strap	Length; 43 cm
--------	---------------------------	---------------



FEATURES

- Floats in water
- Comfortable
- Easy to attach
- Overall length; 86 cm

TOOL / TOILET BAG

25x16x16 CM

EX2571 Tool / toilet bag



FEATURES

- Multi purpose tool / toilet bag
- Inside mesh pocket
- Easy to carry handle
- Compact

PX BRIEFCASE

40x30x5 CM

EX2572 PX10 Briefcase



FEATURES

- PX10 sailcloth
- Four zipped compartments
- Compartment for laptop or tablet
- Internal accessory pockets

DOCUMENT BAG

32x25 CM

EX2575 Document bag



FEATURES

- Splashproof fabric
- Compartment for A4 documents
- Ideal for measurement forms

PENCIL CASE

24x12 CM

EX2576 Pencil case



FEATURES

- Splashproof fabric
- Compartment for pencils / pens

FLOATING KEY CHAIN

85x40x15 CM

EX2588 Floating key chain



FEATURES

- Floats in water
- Personalize with name and sail number
- 3 layered structure

WATERPROOF FLOATING PHONE CASE

21.5x10.5 CM

EX2579 Waterproof floating phone case



FEATURES

- Waterproof; IP68 rated
- Floats in water
- Quick lock sealing clips
- Inside; 9x16 cm

TRAVEL BAGS

ROLLER BAG

74x42x35 CM

EX2623	Roller bag	110 L
--------	------------	-------

FEATURES

- Waterresistant 600D polyester
- Four zipper closable outside pockets
- Four inner pockets; (2 mesh)
- Large main compartment
- Nametag pocket
- 7 cm wheels
- Two grab handles
- Extendable luggage handle



DRY BAG

5L, 15L

EX2605	Dry bag	5 L
EX2608	Dry bag	15 L



FEATURES

- Waterproof 600D polyester
- Lightweight and durable
- Roll top buckle closure
- Transparent window

STORAGE TRAVEL BAG

66x35x30 CM

EX2615	Storage travel bag	70 L
--------	--------------------	------



FEATURES

- Thick 200gsm woven polypropylene
- Splashproof lamination
- Heavy duty handles
- Big zipper on top and one side

DUFFEL TRAVEL BAG

45x30x30 CM

EX2626	Duffel travel bag	30 L
--------	-------------------	------

FEATURES

- Waterresistant 600D polyester
- Backpack and duffelbag in one
- Internal padded laptop compartment
- Internal tablet compartment
- 3 grab handles
- Cable pass through
- Carry-on size
- 3 mesh pockets and 2 outside pockets
- Adjustable sternup strap



ROLL TOP DUFFEL BAG

62x30x30 CM

EX2628	Roll top duffel bag	45 L
--------	---------------------	------

FEATURES

- Waterproof 600D polyester
- Zip front pocket
- Nametag pocket
- External mesh pockets
- Velcro seal
- 2 grab handles





OPTIPARTS
MARINE EQUIPMENT

WIND
DESIGN

Ask for genuine **OPTIPARTS®** and **WINDESIGN®** at:

WWW.OPTIPARTS.COM

WINDESIGN
SAILING.COM



Tel: +31 30 2414068
Email: mail@optiparts.com